

## WHAT YOU WILL NEED...

Apart from the typical tools you will need (assorted wrenches, sockets, hammers, screw drivers, slide calipers, feeler gauges, and the like...), there are some specialized tools you will also require:

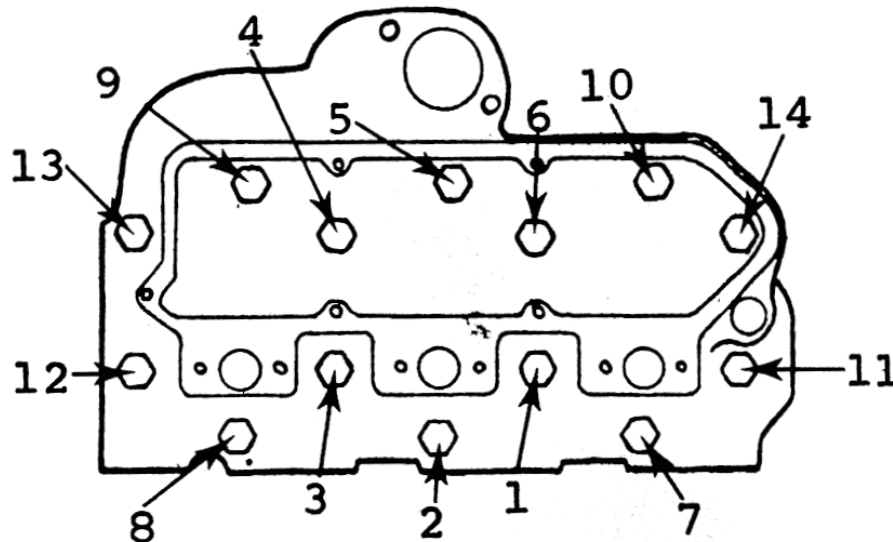


Also, it is a good idea to have some type of cleaning and/or degreasing solution on hand as well as lint-free rags. One of the most important aspects of engine assembly is, **KEEP IT CLEAN!**

## ENGINE BUILD SPECIFICATIONS – JOHN DEERE® 3.179

<b>MAIN CAP BOLTS:</b>	85 ft/lbs
<b>CONNECTING ROD BOLTS:</b>	Black & Phosphate Coated Bolts: 52 ft/lbs Natural Color Bolt: 63 ft/lbs
<b>INTAKE MANIFOLD BOLTS:</b>	35 ft/lbs
<b>EXHAUST MANIFOLD BOLTS:</b>	35 ft/lbs
<b>FLYWHEEL BOLTS:</b>	120 ft/lbs (Use New Bolts and LocTite® Thread Sealer)
<b>VIBRATION DAMPER:</b>	85 ft/lbs
<b>CYLINDER LINER PROTRUSION/RECESSION:</b>	Protrusion: .0004" - .004"
<b>PISTON PROTRUSION:</b>	.013" Above, Max
<b>CRANKSHAFT (TRUST) END PLAY:</b>	.002" - .008"
<b>ROCKER COVER BOLTS:</b>	8 ft/lbs (96 in/lbs)
<b>ROCKER SHAFT CLAMPS:</b>	35 ft/lbs
<b>VALVE CLEARANCE (Set Cold):</b>	Intake: .014"   Exhaust: .018"
<b>CYLINDER HEAD BOLTS:</b>	4.25" Bolts: 47, 65, 95 ft/lbs (Retorque Hot) 4.5" Bolts: 35, 88, 110 ft/lbs (Retorque Hot)
<b>FIRING ORDER:</b>	1 – 2 – 3
<b>OIL PRESSURE AT IDLE:</b>	15 PSI @ Idle

### CYLINDER HEAD TORQUE SEQUENCE:



This information is provided from the best available sources at the time of publication; however, the supplier assumes no responsibility for data accuracy or consequences of its application. Be aware that this publication is NOT a warranty.